

Thursday 7 November 2019 – Morning

GCSE (9–1) Mathematics

J560/05 Paper 5 (Higher Tier)

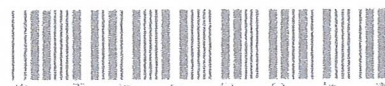
Time allowed: 1 hour 30 minutes

You may use:

- geometrical instruments
- tracing paper

Do not use:

- a calculator



Please write clearly in black ink. **Do not write in the barcodes.**

Centre number

--	--	--	--	--

Candidate number

--	--	--	--

First name(s)

Last name

INSTRUCTIONS

- Use black ink. You may use an HB pencil for graphs and diagrams.
- Answer **all** the questions.
- Read each question carefully before you start to write your answer.
- Where appropriate, your answers should be supported with working. Marks may be given for a correct method even if the answer is incorrect.
- Write your answer to each question in the space provided.
- Additional paper may be used if required but you must clearly show your candidate number, centre number and question number(s).

INFORMATION

- The total mark for this paper is **100**.
- The marks for each question are shown in brackets [].
- This document consists of **16** pages.



No calculator can
be used for this
paper

Answer **all** the questions.

- 1 (a) Work out.

$$\frac{3}{4} + \frac{1}{6}$$

Give your answer in its simplest form.

$$\frac{9}{12} + \frac{2}{12} = \frac{11}{12}$$

(a) $\frac{11}{12}$ [2]

- (b) By writing each number correct to 1 significant figure, use estimation to show that

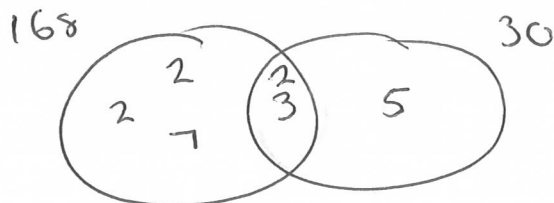
$$\frac{39.6 \times 20.2}{\sqrt{99.2}} \approx 80. \quad [3]$$

$$\frac{40 \times 20}{\sqrt{100}} = 80$$

- 2 Given that $168 = 2^3 \times 3 \times 7$, find the lowest common multiple (LCM) of 168 and 30.

$$30 = 5 \times 3 \times 2$$

$$\begin{aligned} \text{LCM} &= 2 \times 2 \times 7 \times 2 \times 3 \times 5 \\ &= 840 \end{aligned}$$



840 [3]

- 3 Martina has answered some questions on algebra.
In each question, she has made an error.

Describe her error and give the correct answer to each problem.

(a) Question 1 Simplify. $2a \times a \times a$

Martina's answer $4a$

Martina's error is ...adding the terms, instead of multiplying...

Correct answer = $2a^3$ [2]

(b) Question 2 Simplify. $\frac{x^{10}}{x^2}$

Martina's answer x^5

Martina's error is ...dividing the powers, instead of subtracting...

Correct answer = x^8 [2]

(c) Question 3 $s = ut + \frac{1}{2}at^2$

Find s when $u = 0$, $t = 5$ and $a = 6$.

Martina's solution $s = 0 \times 5 + \frac{1}{2} \times 6 \times 5^2$

$$s = 0 + 15^2$$

$$s = 225$$

Martina's error is ...squaring the term $(\frac{1}{2} \times 6 \times 5)$ when it should be just the 5...

Correct answer = 75 [2]

4

- 4 In 2017, a chocolate bar had a mass of 250 g.
In 2018, the mass of the chocolate bar was reduced to 220 g.

Work out the percentage decrease in the mass of the chocolate bar from 2017 to 2018.

$$\frac{250-220}{250} \times 100 = 12$$

..... 12 % [3]

- 5 Solve.

$$6x - 10 = 4x + 1$$

$$2x - 10 = 1$$

$$2x = 11$$

$$x = 5.5$$

x = 5.5 [3]

- 6 Solve by factorising.

$$x^2 + 9x + 20 = 0$$

$$5 \times 4 = 20$$

$$5 + 4 = 9$$

$$(x + 5)(x + 4) = 0$$

$$x = -5 \quad x = -4$$

$$x = \dots -5 \dots \text{ or } x = \dots -4 \dots [3]$$

- 7 Sundip and Emma have some money.
The ratio of Sundip's money to Emma's money is 3 : 5.
Emma spends £450 of her money.
The ratio of Sundip's money to Emma's money is now 2 : 3.

Find how much money Sundip has.

$$S : E$$

$$3 : 5$$

↓ Emma spends 450

$$2 : 3$$

make 5 a common number.

$$S : E$$

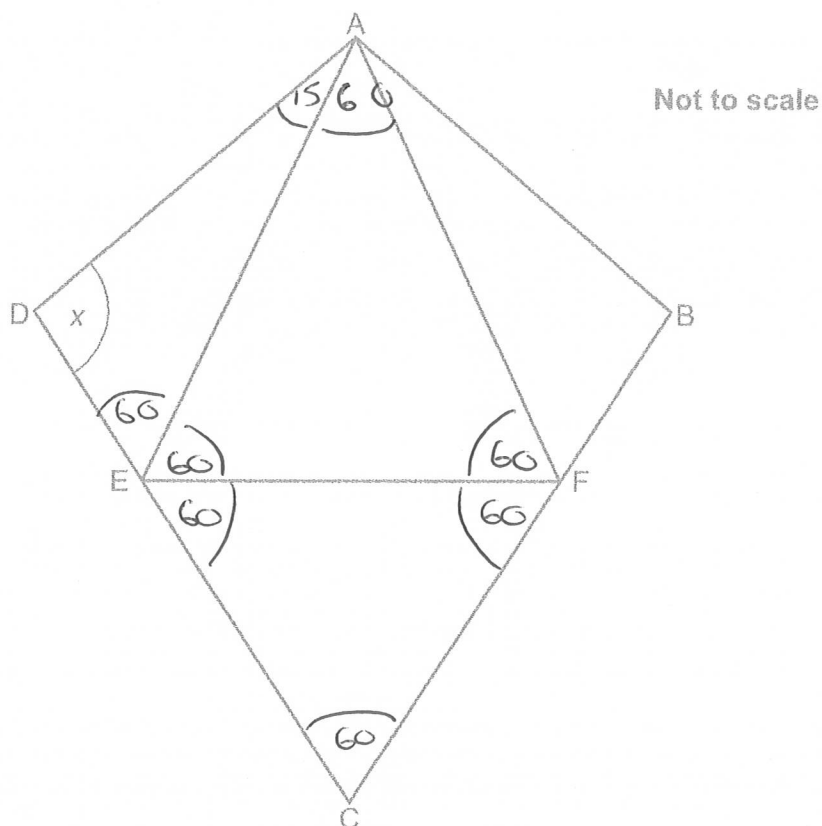
$$6 : 10 \rightarrow 1 \text{ part} = 450$$

$$6 : 9$$

$$450 \times 6 = 2700$$

$$£ \dots 2700 \dots [4]$$

- 8 The diagram shows a kite, ABCD.
AFE and CEF are equilateral triangles.



- (a) Write down a mathematical name for quadrilateral AFCE.

(a) rhombus [1]

- (b) The ratio of angle DAE : angle EAF = 1 : 4.

Work out angle x .

Write on the diagram the values of any other angles you use in your working.

$$\begin{aligned} x &= 180 - 15 - 60 \\ &= 105 \end{aligned}$$

(b) $x =$ 105 ° [4]

- 9 (a) The scale 1 cm represents 25 m can be written in the form 1 : k .

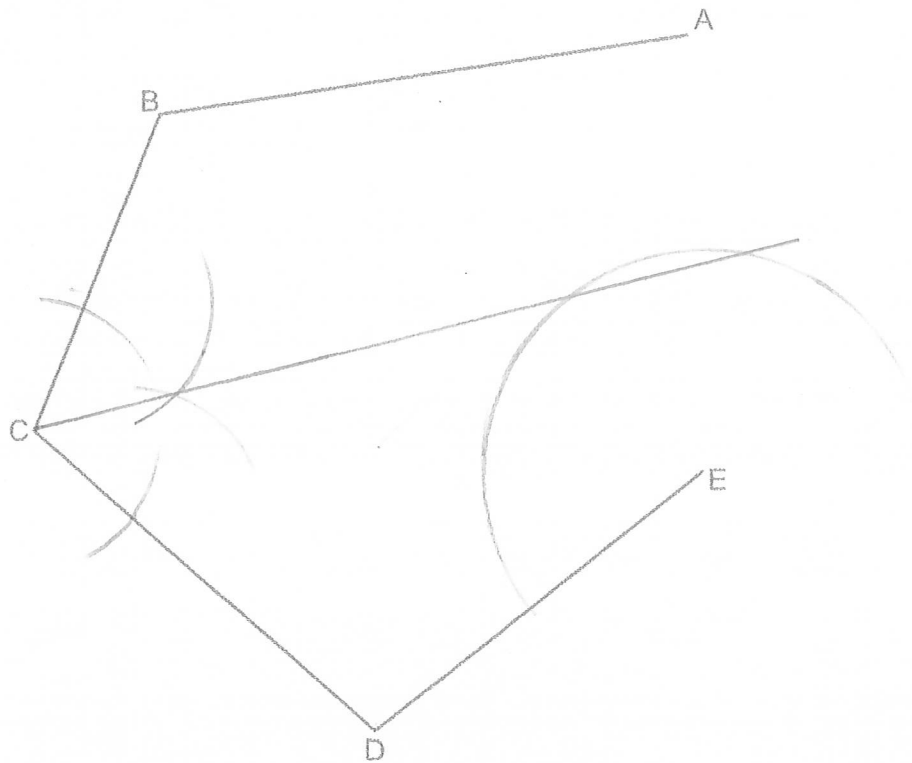
Find the value of k .

↓
2500 cm

(a) $k = \dots\dots\dots 2500 \dots\dots\dots$ [1]

- (b) The scale drawing represents a harbour.

Scale: 1 cm represents 25 m



A boat leaves the harbour from point C and sails on a path that is equidistant from BC and CD. The harbour rules do not allow boats to sail within 75 m of point E.

↪ 3 cm

Find by construction whether the path of the boat will follow the harbour rules. Show all your construction lines.

No

[5]

- 10 On a plane, $\frac{2}{5}$ of the passengers were British.

30% of the British passengers were men.
There were 36 British men on the plane.

total passengers = x

Find the total number of passengers on the plane.

$$\frac{2}{5} = 0.4$$

$$30\% = 0.3$$

$$0.4 \times 0.3 \times x = 36$$

$$x = 300$$

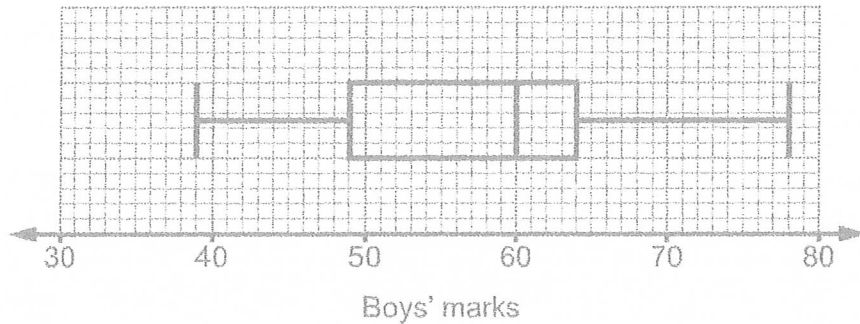
.....300..... [5]

- 11 A bag contains 100 pencils that are either red or green.

Describe a method you could use to estimate the number of red pencils in the bag without looking into the bag or having more than one of the pencils out of the bag at any one time.

.....select a pencil from the bag and record the
.....results, place the pencil back into the bag.
.....Repeat at least 10 times. Find relative frequency
.....and multiply by 100..... [4]

12 The box plot shows the distribution of the marks scored by some boys in a test.



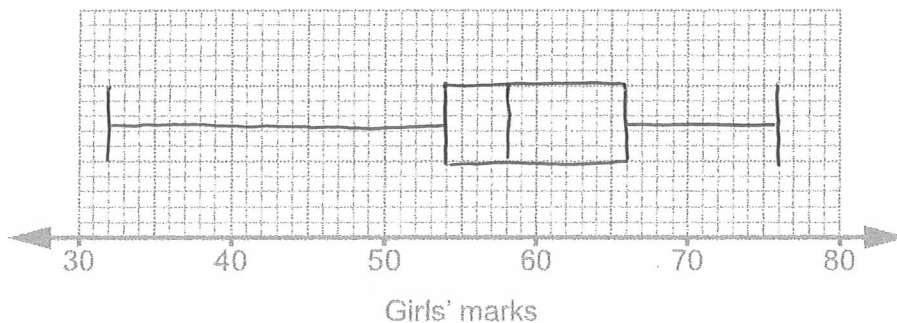
(a) Find the interquartile range.

(a) 15 [2]

(b) The marks for some girls in the same test are summarised below.

- median = 58
- lowest mark = 32
- range = 44
- upper quartile = 66
- interquartile range = 12

Draw a box plot to show the distribution of the marks scored by the girls.



[3]

(c) Eleanor says

The boys did better, on average, in the test as they had a bigger interquartile range.

Is her statement correct?
Explain your reasoning.

..... Incorrect as the interquartile range measures
the spread not average [2]

- 13 (a) (i) Write $\frac{1}{3}$ as a recurring decimal.

(a)(i) $0.\dot{3}$ [1]

- (ii) Write $\frac{1}{30}$ as a recurring decimal.

(ii) $0.0\dot{3}$ [1]

- (b) Simplify fully by rationalising the denominator.

$$\frac{20}{\sqrt{5}} \times \frac{\sqrt{5}}{\sqrt{5}} = \frac{20\sqrt{5}}{5} = 4\sqrt{5}$$

(b) $4\sqrt{5}$ [3]

- 14 y is inversely proportional to the square root of x .
 $y = 7$ when $x = 25$.

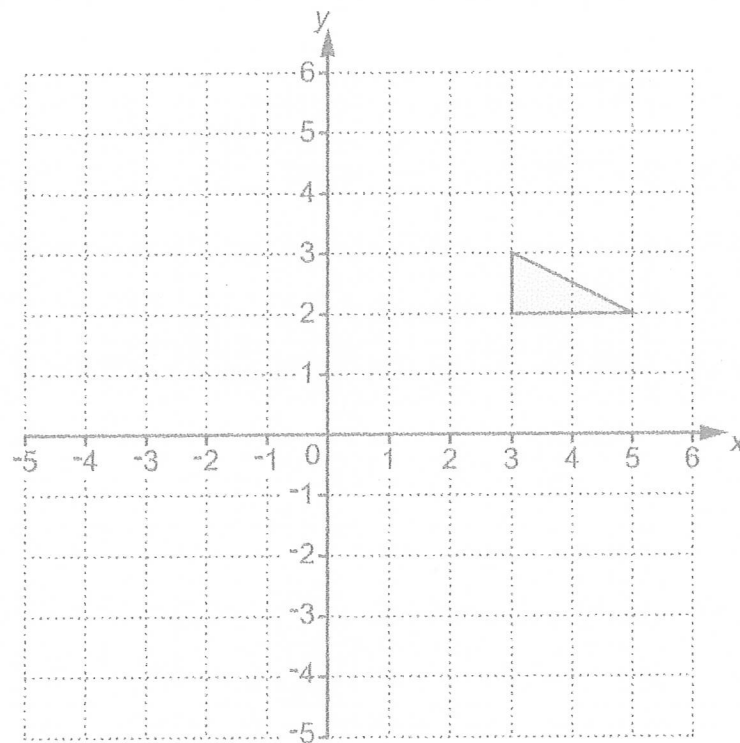
Find the value of y when $x = 100$.

$$y = \frac{k}{\sqrt{x}} \rightarrow 7 = \frac{k}{\sqrt{25}} \rightarrow k = 35$$

$$y = \frac{35}{\sqrt{100}} = 3.5$$

$y =$ 3.5 [3]

15 You may use this coordinate grid to help you answer the following questions.



Describe fully the **single** transformation that is equivalent to

- (a) a translation of $\begin{pmatrix} -7 \\ 2 \end{pmatrix}$ followed by a translation of $\begin{pmatrix} 3 \\ -5 \end{pmatrix}$.

translation of $\begin{pmatrix} -4 \\ -3 \end{pmatrix}$ [2]

- (b) a reflection in the line $y = x$ followed by a rotation of 90° clockwise around $(0, 0)$.

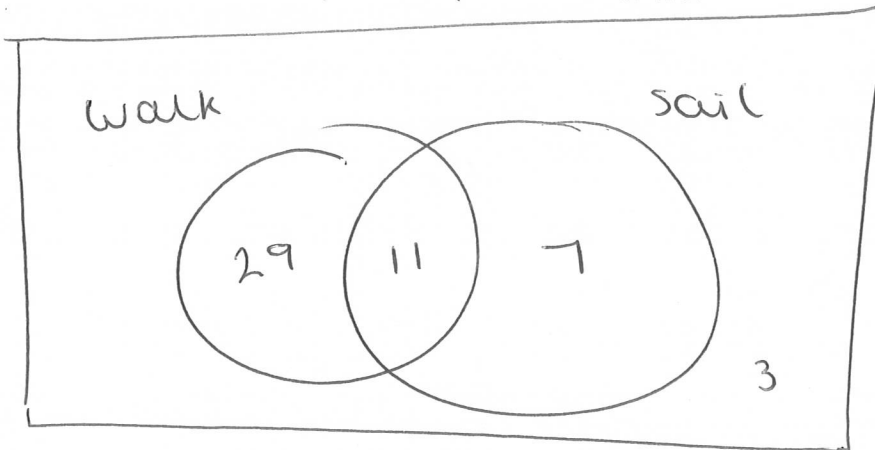
reflection in the x axis. [3]

16 50 people attended an outdoor activity day.

- 40 took part in walking.
- 18 took part in sailing.
- 3 did neither activity.

One of the people who walked is chosen at random.

Find the probability that this person also sailed.



$$50 - 3 = 47$$

$$40 + 18 = 58$$

$$58 - 47 = 11$$

$$\frac{11}{40}$$

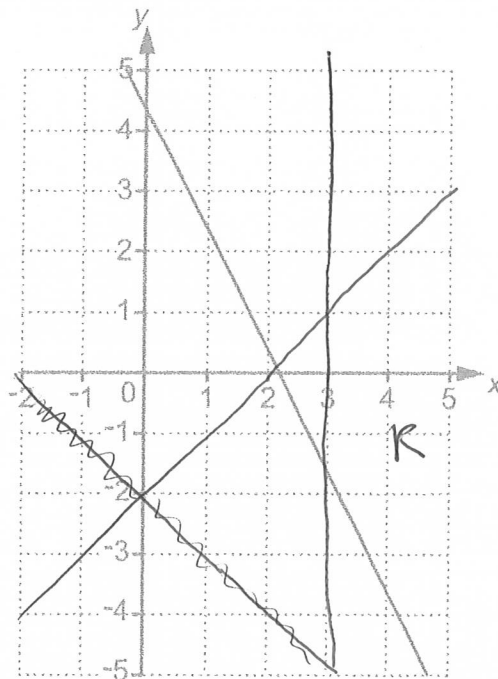
[5]

- 17 Show that $\sqrt[3]{a^4} \times \frac{1}{a}$ can be expressed as $a^{\frac{1}{3}}$.

[3]

$$a^{\frac{4}{3}} \times a^{-1} \rightarrow a^{\frac{4}{3} - \frac{3}{3}} \rightarrow a^{\frac{1}{3}}$$

- 18 The graph of $3y + 6x = 13$ is drawn on the grid.



The region R satisfies these inequalities.

$$3y + 6x \geq 13 \quad y \leq x - 2 \quad x > 3$$

By drawing two more straight lines, find and label the region R.

[6]

- 19 (a) Write down the value of $\sin 45^\circ$.

$$\frac{1}{\sqrt{2}} \times \frac{\sqrt{2}}{\sqrt{2}} = \frac{\sqrt{2}}{2}$$

(a) [1]

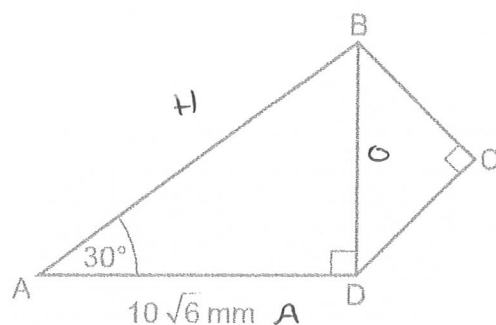
- (b) ADB and BCD are right-angled triangles.

$$BC = CD.$$

$$AD = 10\sqrt{6} \text{ mm.}$$

$$\text{Angle } BAD = 30^\circ.$$

$$\tan 30^\circ = \frac{1}{\sqrt{3}}$$



Not to scale

Work out the length of BC.

$$\tan 30 = \frac{BD}{10\sqrt{6}}$$

$$\frac{1}{\sqrt{3}} = \frac{BD}{10\sqrt{6}}$$

$$BD = BD = \frac{10\sqrt{6}}{\sqrt{3}} = 10\sqrt{2}$$

$$BC = \sqrt{\frac{(10\sqrt{2})^2}{2}} = 10$$

(b)10.....mm [6]

- 20 (a) Write $x^2 - 6x + 11$ in the form $(x - a)^2 + b$.

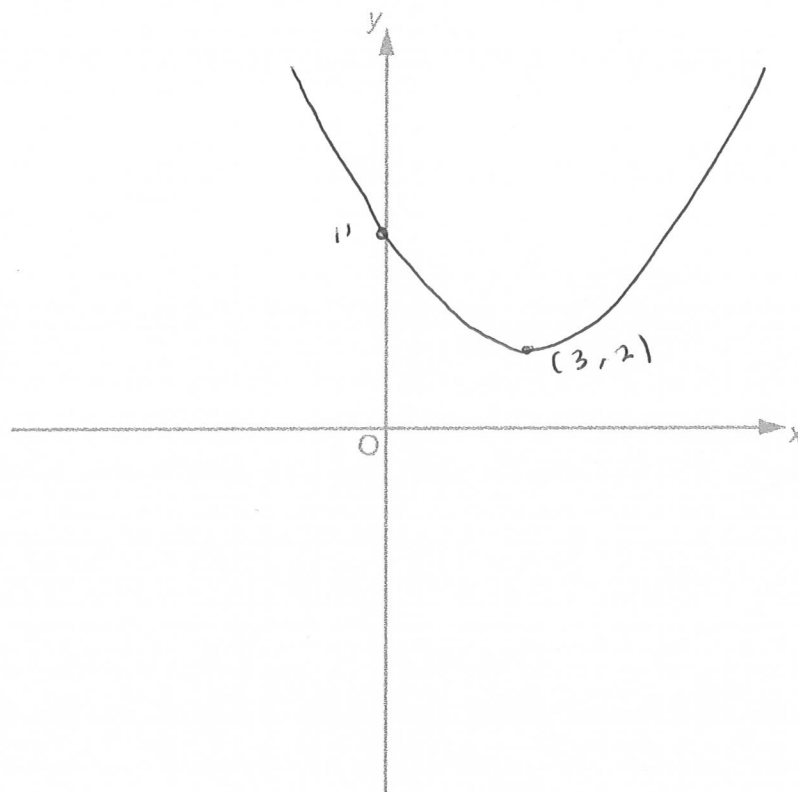
$$(x - 3)^2 - 9 + 11$$

$$(x - 3)^2 + 2$$

(a) $(x - 3)^2 + 2$ [3]

- (b) Sketch the graph of $y = x^2 - 6x + 11$.
Show clearly the coordinates of any turning points.

TP: $(3, 2)$



[3]

Turn over for Question 21

21 In this question all units are in cm.

A circle has equation $x^2 + y^2 = 36$.

(a) Write down the radius and centre of the circle.

(a) radius: 6 cm

centre: (..... 0, 0) [2]

(b) The distinct points A ($a, \sqrt{11}$) and B ($b, \sqrt{11}$) lie on the circumference of the circle.

Work out the length AB.

$$\text{when } y = \sqrt{11}$$

$$x^2 + 11 = 36$$

$$x^2 = 25$$

$$x = \pm 5$$

(b) 10 cm [4]

END OF QUESTION PAPER

OCR

Oxford Cambridge and RSA

Copyright Information

OCR is committed to seeking permission to reproduce all third-party content that it uses in its assessment materials. OCR has attempted to identify and contact all copyright holders whose work is used in this paper. To avoid the issue of disclosure of answer-related information to candidates, all copyright acknowledgements are reproduced in the OCR Copyright Acknowledgements Booklet. This is produced for each series of examinations and is freely available to download from our public website (www.ocr.org.uk) after the live examination series. If OCR has unwittingly failed to correctly acknowledge or clear any third-party content in this assessment material, OCR will be happy to correct its mistake at the earliest possible opportunity.

For queries or further information please contact The OCR Copyright Team, The Triangle Building, Shaftesbury Road, Cambridge CB2 8EA.

OCR is part of the Cambridge Assessment Group. Cambridge Assessment is the brand name of University of Cambridge Local Examinations Syndicate (UCLES), which is itself a department of the University of Cambridge.