

MATHS MADE  
EASY

# OCR

Oxford Cambridge and RSA

# H

## GCSE (9–1) Mathematics J560/04 Paper 4 (Higher Tier)

**Thursday 24 May 2018 – Morning**  
**Time allowed: 1 hour 30 minutes**



**You may use:**

- a scientific or graphical calculator
- geometrical instruments
- tracing paper



First name											
Last name											
Centre number											
Candidate number											

### INSTRUCTIONS

- Use black ink. You may use an HB pencil for graphs and diagrams.
- Complete the boxes above with your name, centre number and candidate number.
- Answer **all** the questions.
- Read each question carefully before you start to write your answer.
- Where appropriate, your answers should be supported with working. Marks may be given for a correct method even if the answer is incorrect.
- Write your answer to each question in the space provided. Additional paper may be used if required but you must clearly show your candidate number, centre number and question number(s).
- Do **not** write in the barcodes.

### INFORMATION

- The total mark for this paper is **100**.
- The marks for each question are shown in brackets [ ].
- Use the  $\pi$  button on your calculator or take  $\pi$  to be 3.142 unless the question says otherwise.
- This document consists of **20** pages.

Answer all the questions.

- 1 (a) The ratio 2 centimetres to 5 metres can be written in the form  $1 : n$ .  
Find the value of  $n$ .

(a)  $n = \dots\dots\dots 250 \dots\dots\dots$  [2]

- (b) Jay, Sheila and Harry share £7200 in the ratio 1 : 2 : 5.  
How much does Harry receive?

$$\frac{5}{8} \times 7200$$

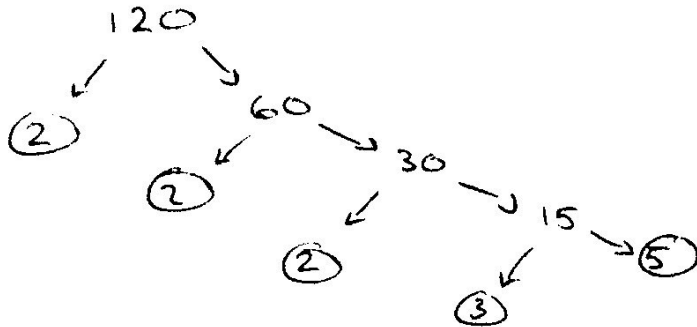
(b) £  $\dots\dots\dots 4500 \dots\dots\dots$  [2]

- 2 Given that  $y^{18} + y^6 = y^k$ , find the value of  $k$ .

$k = \dots\dots\dots 12 \dots\dots\dots$  [1]

3

3 (a) (i) Write 120 as a product of its prime factors.



(a)(i)  $2 \times 2 \times 2 \times 3 \times 5$  ..... [3]

(ii) The lowest common multiple (LCM) of  $x$  and 120 is 360.

Find the smallest possible value of  $x$ .

(ii)  $9$  ..... [2]

(b) Two numbers,  $A$  and  $B$ , are written as a product of prime factors.

$$A = 2^4 \times 3^2 \times 7^2 \quad B = 2^3 \times 3 \times 5 \times 7$$

Find the highest common factor (HCF) of  $A$  and  $B$ .

$$2^3 \times 3 \times 7 = 168$$

(b)  $168$  ..... [2]

4

- 4 Lee wishes to find out if there is a relationship between a person's age and the time it takes them to complete a puzzle.

Lee decides to conduct an experiment.

She asks 12 people to complete the puzzle.

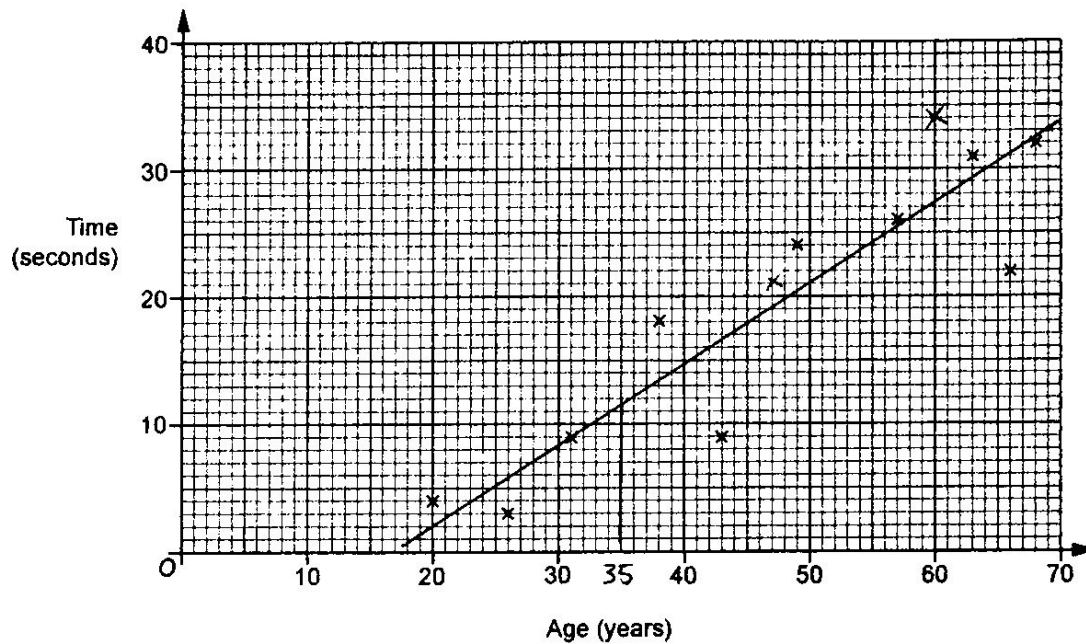
She records each person's age and the time taken to complete the puzzle.

- (a) Make one criticism of Lee's method.

*Small sample size*

[1]

- (b) This scatter diagram shows the results for ten of the people in Lee's experiment.



Here are the other two results.

Age (years)	47	60
Time (seconds)	21	34

Plot these results on the scatter diagram.

[2]

- (c) What type of correlation is shown in the scatter diagram?

(c) *Positive* [1]

- (d) Estimate the time it would take a person aged 35 to complete the puzzle.

Show your working to justify your answer.

(d) .....11 seconds..... [2]

- (e) Lee says that at least 80% of the 12 people completed the puzzle in under 30 seconds.

Is Lee correct?

Show working to support your answer.

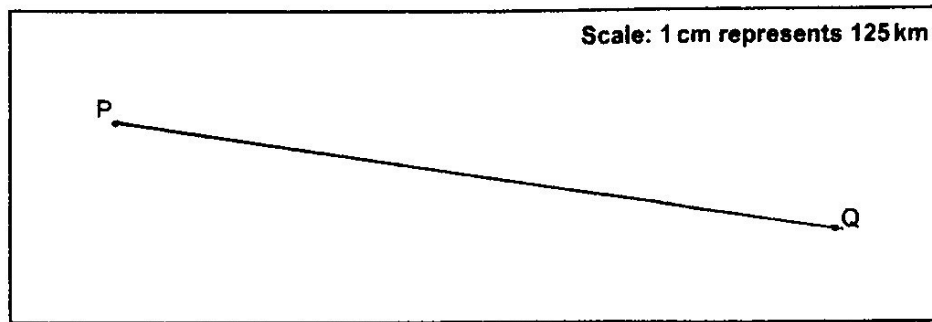
$\frac{9}{12}$  completed it in under 30 sec

so  $\frac{9}{12} \equiv 75\%$

hence Lee is incorrect.

..... [3]

5 The scale diagram below shows two cities, P and Q.



A plane departs from P at 09 47 and arrives at Q at 12 07.

$$13 + 2 + 7 = 2.5 \text{ hrs}$$

(a) Work out the average speed, in kilometres per hour, of the plane.

$$11.4 \times 125 = 1425 \text{ km}$$

$$s = \frac{\text{distance}}{\text{time}} = \frac{1425}{2 \frac{1}{3}}$$

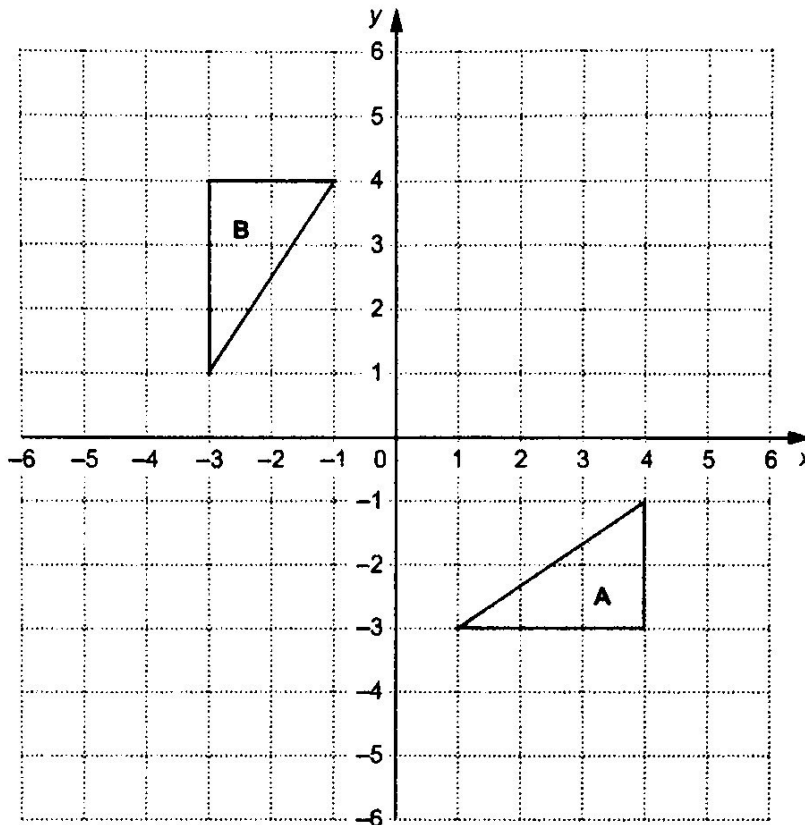
(a) 610.7 km/h [5]

(b) Give one reason why your answer may be inaccurate.

assume flight path was a straight line between P and Q [1]

7

6 Triangles A and B are drawn on a coordinate grid.



(a) Describe fully the **single** transformation that maps triangle A onto triangle B.

reflection in  $y=x$   
 ..... [2]

(b) Triangle A can also be mapped onto triangle B using a combination of two transformations:

- a transformation T, followed by
- a reflection in the line  $x = 0$ .

Describe fully transformation T.

Rotation  $90^\circ$  anticlockwise about  
 .....  
 .....  $(0,0)$  ..... [4]

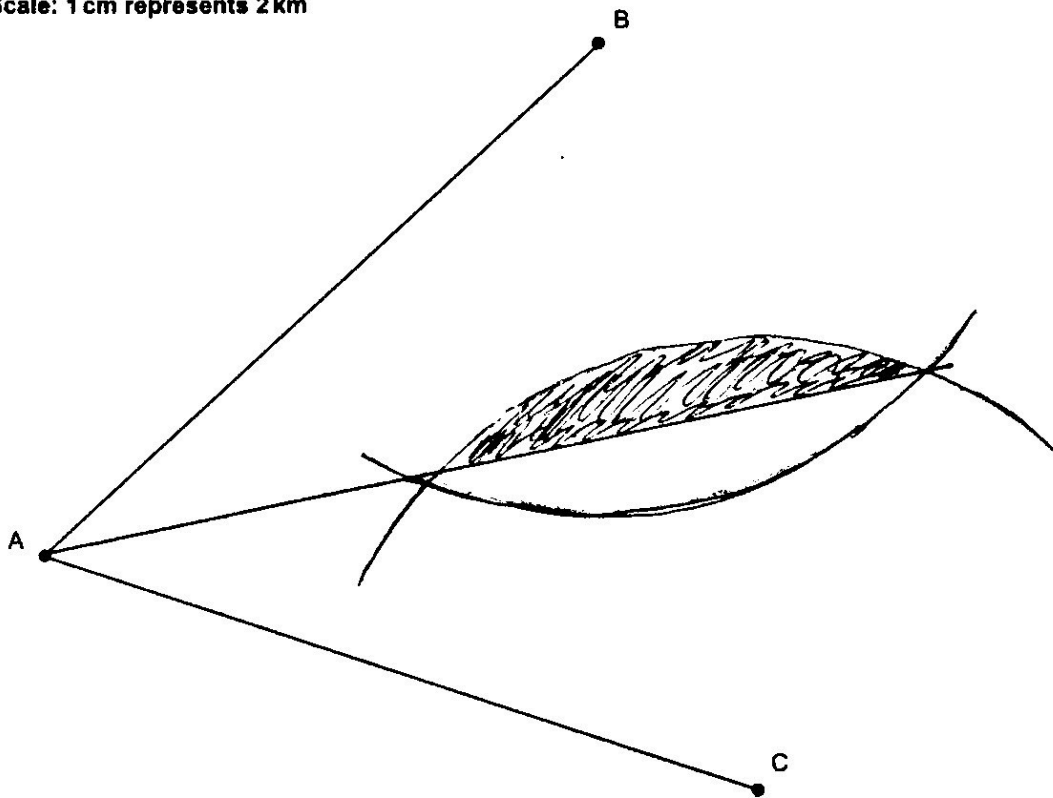
- 7 The scale diagram below shows towns, A, B and C.  
Line AB represents the road from A to B and line AC represents the road from A to C.

A shopping centre is to be built so that it is

- nearer to the road from A to B than the road from A to C,
- less than 14 km from town C.

- (a) Using construction, shade the region where the shopping centre could be built.  
Show all your construction lines.

Scale: 1 cm represents 2 km



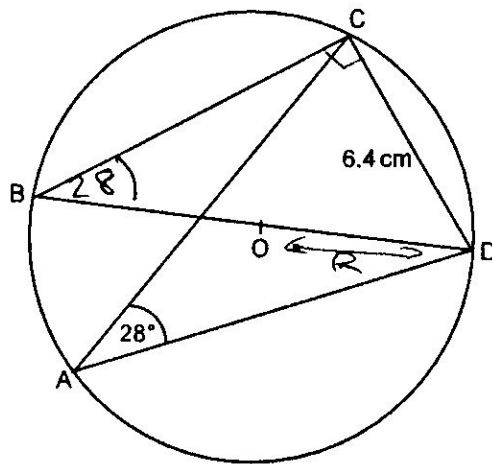
[5]

- (b) Explain why the region found in part (a) may not be an appropriate site for the shopping centre.

area may not be suitable for  
building on. [1]



- 8 A, B, C and D are points on the circumference of a circle, centre O.



Not to scale

Angle CAD =  $28^\circ$  and CD = 6.4 cm.  
BD is a diameter of the circle.

Calculate the area of the circle.

$$\angle CBD = 28^\circ$$

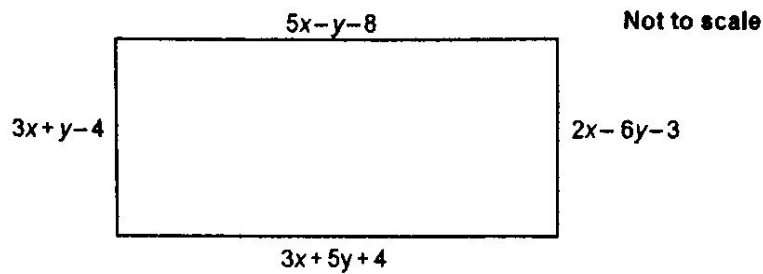
$$\frac{6.4}{\sin 28} = \frac{2R}{\sin 90}$$

$$R = 6.8162 \dots$$

$$\pi R^2 = 145.9591$$

$$\underline{\hspace{10em}} 145.96 \text{ cm}^2 \text{ [5]}$$

- 9 The dimensions, in centimetres, of this rectangle are shown as algebraic expressions.



Work out the length and width of the rectangle.

$$3x + y - 4 = 2x - 6y - 3$$

$$\Rightarrow x + 7y = 1$$

$$5x - y - 8 = 3x + 5y + 4$$

$$\Rightarrow 2x - 6y = 12$$

$$2x + 14y = 2$$

$$2x - 6y = 12$$

$$\Rightarrow 20y = -10$$

$$y = -\frac{1}{2} \quad \Rightarrow x = 4.5$$

$$\Rightarrow L = 5(4.5) - (-\frac{1}{2}) - 8 = 15$$

$$\Rightarrow w = 9$$

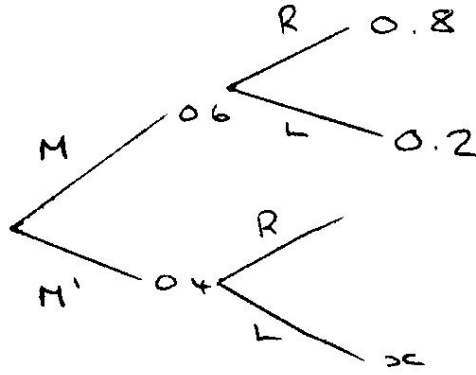
length = ..... 15 ..... cm

width = ..... 9 ..... cm

[6]

- 10 60% of the people in a town are males.  
 20% of the males are left-handed.  
 21.6% of all the people are left-handed.

Work out the percentage of the people who are not male who are left-handed.



$$0.6 \times 0.2 + 0.4 \times x = 0.216$$

$$x = \underline{0.24}$$

..... 24 % [5]

12

11  $y$  is directly proportional to the square of  $x$ .

Find the percentage increase in  $y$  when  $x$  is increased by 15%.

↑ 15%

$$y \propto x^2 \Rightarrow y = kx^2$$

$$y = k(1.15x)^2$$

$$y = 1.3225 kx^2$$

..... 32.25 % [4]

12 The value of a car, £ $V$ , is given by

$$V = 16500 \times 0.82^n$$

where  $n$  is the number of years after it is bought from new.

(a) Write down the value of the car when new.

(a) £..... 16500 ..... [1]

(b) Write down the annual percentage decrease in the value of the car.

(b) ..... 18 ..... % [1]

(c) Show that the value of the car after 4 years is less than half its value when new. [2]

$$16500 \times 0.82^4 = 7460.00904$$

$$Ans \times 2 = 14920.01808$$

which is less than the value  
at new so after 4 yrs  
car is less than half its  
original value

13 A menu has

- 6 starters
- 10 main dishes
- 7 desserts.

(a) A three-course meal consists of a starter, a main dish and a dessert.

How many different three-course meals are possible?

$$6 \times 10 \times 7 = 420$$

(a) ..... 420 ..... [2]

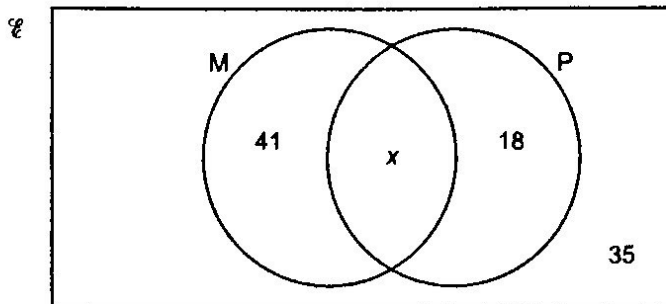
(b) A two-course meal consists either of a starter with a main dish, a starter with a dessert or a main dish with a dessert.

Show that there are 172 possible different two-course meals.

[3]

$$\begin{array}{r}
 6 \times 10 = 60 \\
 + 10 \times 7 = 70 \\
 + 6 \times 7 = 42 \\
 \hline
 172 \\
 \hline
 \end{array}$$

- 14 The Venn diagram shows the number of students studying Mathematics (M) and the number of students studying Physics (P) in a college. 35 students do not study either subject.



- (a) The total number of students is 121.

Find the value of  $x$ .

(a)  $x = 27$  [1]

- (b) One of the 121 students is selected at random.

Find the probability that this student studies Mathematics, given that they study Physics.

$$\frac{27}{(27+18)} = \frac{27}{45} = \frac{3}{5}$$

(b)  $0.6$  [2]

15

15 (a) Write  $x^2 - 8x + 25$  in the form  $(x - a)^2 + b$ .

$$(x - 4)^2 + 9$$

(a) ..... [3]

(b) Write down the coordinates of the turning point of the graph of  $y = x^2 - 8x + 25$ .

(b) (.....<sup>4</sup>....., .....<sup>9</sup>.....) [2]

(c) Hence describe the single transformation which maps the graph of  $y = x^2$  onto the graph of  $y = x^2 - 8x + 25$ .

translation  $\begin{pmatrix} 4 \\ 9 \end{pmatrix}$

.....  
.....  
..... [2]

MATHS MADE  
EASY

16

16 Solve by factorisation.

$$3x^2 + 11x - 20 = 0$$

$$(3x - 4)(x + 5)$$

$$x = \frac{4}{3} \quad \text{or} \quad x = -5$$

$$x = \frac{4}{3} \quad \text{or} \quad x = -5 \quad [3]$$



17 For each graph below, select its possible equation from this list.

$y = \frac{1}{x}$

$y = \cos x$

$y = x^2$

$y = \left(\frac{1}{2}\right)^x$

$y = 2^x$

$y = \sin x$

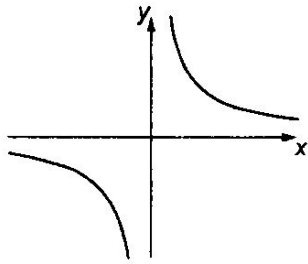
$y = 2^{-x}$

$y = \tan x$

$y = x^3$

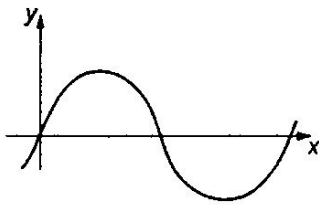
$y = \frac{1}{x^2}$

(a)



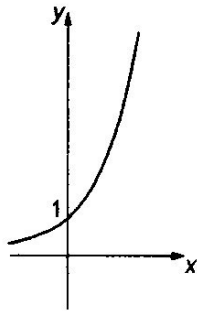
(a)  $y = \frac{1}{x}$  .....

(b)



(b)  $y = \sin x$  .....

(c)

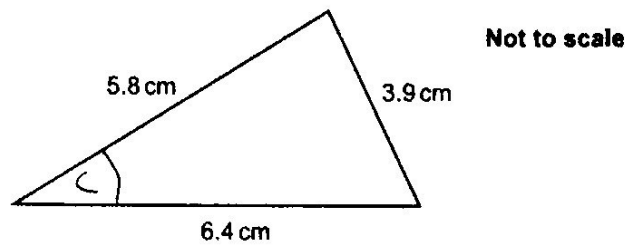


(c)  $y = 2^x$  .....

[3]

18

18 Calculate the area of this triangle.



using  $c^2 = a^2 + b^2 - 2ab \cos C$

$$\cos C = \frac{c^2 - a^2 - b^2}{(-2ab)}$$

$$= \frac{3.9^2 - 6.4^2 - 5.8^2}{(-2 \times 5.8 \times 6.4)}$$

$$= \frac{-59.39}{-74.24} = 0.799973\dots$$

$$\Rightarrow C = \cos^{-1}(0.799973\dots) = 36.872^\circ$$

$$\text{Area} = \frac{1}{2} ab \sin C$$

$$= \frac{1}{2} \times 5.8 \times 6.4 \times \sin(36.872\dots)$$

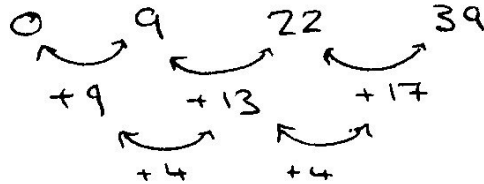
$$= \dots\dots\dots 11.13 \dots\dots\dots \text{cm}^2 \quad [6]$$

19 Here are the first four terms of a quadratic sequence.

0      9      22      39

The  $n$ th term can be written as  $an^2 + bn + c$ .

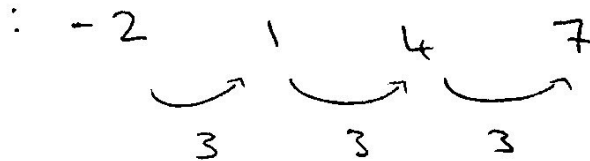
Find the values of  $a$ ,  $b$  and  $c$ .



$$a = \frac{4}{2} = 2$$

$n^2$ :	1	4	9	16
$2n^2$ :	2	8	18	32

sequence -  $2n^2$  :



$$\therefore b = 3$$

$$\therefore c = -5$$

$$\Rightarrow \underline{2n^2 + 3n - 5}$$

$a = \dots\dots\dots 2$   
 $b = \dots\dots\dots 3$   
 $c = \dots\dots\dots -5$   
[4]

20 Solve this equation, giving your answers correct to 1 decimal place.

$$\frac{5}{x+2} + \frac{3}{x-3} = 2$$

$$5(x-3) + 3(x+2) = 2(x+2)(x-3)$$

$$5x - 15 + 3x + 6 = 2(x^2 - x - 6)$$

$$8x - 9 = 2x^2 - 2x - (6 \times 2)$$

$$\Rightarrow 2x^2 - 10x - 3 = 0$$

$$x = \frac{-b \pm \sqrt{b^2 - 4ac}}{2a}$$

$$x = \frac{10 \pm \sqrt{100 + 24}}{4} = \frac{10 \pm \sqrt{124}}{4}$$

$$x = \frac{10 + 2\sqrt{31}}{4} = \frac{5 + \sqrt{31}}{2} = 5.2839$$

or

$$x = \frac{10 - 2\sqrt{31}}{4} = \frac{5 - \sqrt{31}}{2} = -0.2839$$

$x = \dots -0.3 \dots$  or  $x = \dots 5.3 \dots$  [6] (1.d.p.)

END OF QUESTION PAPER

**OCR**

Oxford, Cambridge and RSA

Copyright Information

OCR is committed to seeking permission to reproduce all third-party content that it uses in its assessment materials. OCR has attempted to identify and contact all copyright holders whose work is used in this paper. To avoid the issue of disclosure of answer-related information to candidates, all copyright acknowledgements are reproduced in the OCR Copyright Acknowledgements Booklet. This is produced for each series of examinations and is freely available to download from our public website ([www.ocr.org.uk](http://www.ocr.org.uk)) after the live examination series. If OCR has unwittingly failed to correctly acknowledge or clear any third-party content in this assessment material, OCR will be happy to correct its mistake at the earliest possible opportunity.

For queries or further information please contact the Copyright Team, First Floor, 9 Hills Road, Cambridge CB2 1GE.

OCR is part of the Cambridge Assessment Group. Cambridge Assessment is the brand name of University of Cambridge Local Examinations Syndicate (UCLES), which is itself a department of the University of Cambridge.