

Write your name here

Surname

Other names

Pearson Edexcel

Level 1/Level 2 GCSE (9-1)

Centre Number

--	--	--	--	--

Candidate Number

--	--	--	--	--

Mathematics

Paper 1 (Non-Calculator)

Foundation Tier

Thursday 2 November 2017 – Morning

Time: 1 hour 30 minutes

Paper Reference

1MA1/1F

You must have: Ruler graduated in centimetres and millimetres, protractor, pair of compasses, pen, HB pencil, eraser. Tracing paper may be used.

Total Marks

Instructions

- Use **black** ink or ball-point pen.
- **Fill in the boxes** at the top of this page with your name, centre number and candidate number.
- Answer **all** questions.
- Answer the questions in the spaces provided – *there may be more space than you need.*
- You must **show all your working**.
- Diagrams are **NOT** accurately drawn, unless otherwise indicated.
- **Calculators may not be used.**



Information

- The total mark for this paper is 80
- The marks for **each** question are shown in brackets – *use this as a guide as to how much time to spend on each question.*

Advice

- Read each question carefully before you start to answer it.
- Keep an eye on the time.
- Try to answer every question.
- Check your answers if you have time at the end.

Turn over ►

P49347A

©2017 Pearson Education Ltd.

6/6/6/7/2/



P 4 9 3 4 7 A 0 1 2 4



Pearson

Answer ALL questions.

Write your answers in the spaces provided.

You must write down all the stages in your working.

- 1 (a) Change 365 cm into metres.

3.65 m
(1)

- (b) Change 2.7 kg into grams.

2700 g
(1)

(Total for Question 1 is 2 marks)

- 2 Work out $2 + 7 \times 10$

$$2 + (7 \times 10) = 72$$

(Total for Question 2 is 1 mark)

- 3 Solve $\frac{y}{4} = 10.5$

$$y = 10.5 \times 4 \\ = 42$$

$y =$

(Total for Question 3 is 1 mark)

- 4 Here are four numbers.

-9 -2 2 9

Write one of these numbers in each box to make a correct calculation.

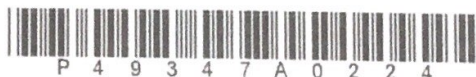
$$\boxed{-9} + \boxed{2} = -7$$

(Total for Question 4 is 1 mark)

DO NOT WRITE IN THIS AREA

DO NOT WRITE IN THIS AREA

DO NOT WRITE IN THIS AREA



DO NOT WRITE IN THIS AREA

DO NOT WRITE IN THIS AREA

DO NOT WRITE IN THIS AREA

- 5 Here are the first four terms of a number sequence.

2 5 11 23

The rule to continue this sequence is

multiply the previous term by 2 and then add 1

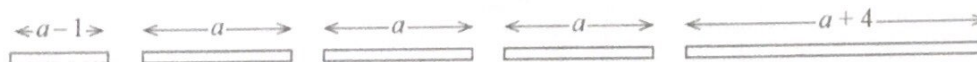
Work out the 5th term of this sequence.

$$(23 \times 2) + 1$$

47

(Total for Question 5 is 1 mark)

- 6 Here are five straight rods.



All measurements are in centimetres.

The total length of the five rods is L cm.

Find a formula for L in terms of a .

Write your formula as simply as possible.

$$\begin{aligned} L &= (a-1) + a + a + a + (a+4) \\ &= 5a + 4 - 1 \end{aligned}$$

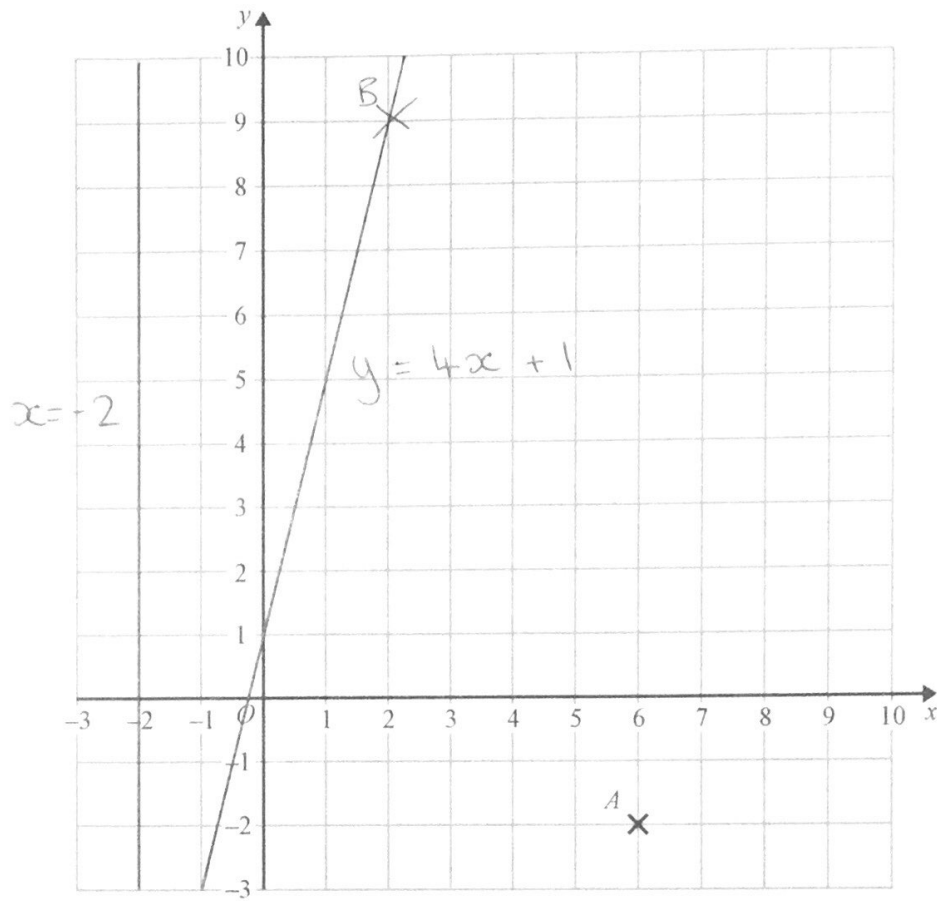
$$L = 5a + 3$$

(Total for Question 6 is 3 marks)



P 4 9 3 4 7 A 0 3 2 4

7



(a) Write down the coordinates of the point A.

(6 , -2)
(1)

DO NOT WRITE IN THIS AREA

DO NOT WRITE IN THIS AREA

DO NOT WRITE IN THIS AREA

DO NOT WRITE IN THIS AREA

DO NOT WRITE IN THIS AREA

DO NOT WRITE IN THIS AREA

- (b) (i) Plot the point with coordinates (2, 9).
Label this point B.

(1)

- (ii) Does point B lie on the straight line with equation $y = 4x + 1$?
You must show how you get your answer.

Drawn line on graph
or substitution of $x=2$

$$y = 4(2) + 1 = 9$$

\therefore B does lie on the straight line (1)

- (c) On the grid, draw the line with equation $x = -2$

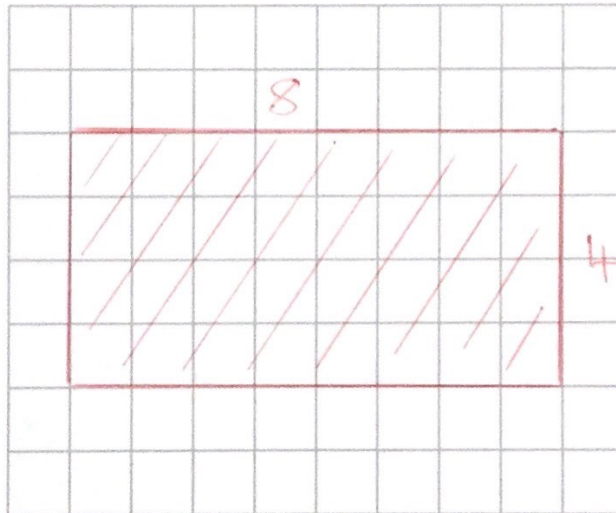
(1)

(Total for Question 7 is 4 marks)

- 8 The length of a rectangle is twice as long as the width of the rectangle.
The area of the rectangle is 32 cm^2 .

Draw the rectangle on the centimetre grid.

$$4 \times 8 = 32 \text{ cm}^2$$



(Total for Question 8 is 2 marks)



P 4 9 3 4 7 A 0 5 2 4

9 Jacqui wants to work out $3480 \div 5$

$$3480 \div 5 = 696$$

She knows that $3480 \div 10 = 348$

Jacqui writes $3480 \div 5 = 174$

because $10 \div 5 = 2$

and $348 \div 2 = 174$

$$348 \times 2 = 696$$

What mistake did Jacqui make in her method?

Should have multiplied 348 by
2, not have divided by 2

(Total for Question 9 is 1 mark)

DO NOT WRITE IN THIS AREA

DO NOT WRITE IN THIS AREA

DO NOT WRITE IN THIS AREA



DO NOT WRITE IN THIS AREA

10 Jake and Sarah each played a computer game six times.

Their scores for each game are shown below.

Jake	10	9	8	11	12	8
Sarah	2	10	7	14	4	10

- (a) Who had the most consistent scores, Jake or Sarah?
You must give a reason for your answer.

Jakes figures are closer together
so have a smaller spread.

(1)

Jake played a different game 20 times.

The stem and leaf diagram shows information about his scores.

0	9
1	2 3 3 4 5
2	5 6 6 6 6 7
3	1 3 4 6 8
4	0 2 9

Key

1 | 2 represents 12 points

Jake said his modal score was 6 points because 6 occurs most often in the diagram.

- (b) Is Jake correct?
You must explain your answer.

Incorrect reading of stem and leaf
diagram - answer is 26 not 6

(1)

(Total for Question 10 is 2 marks)

DO NOT WRITE IN THIS AREA



11 There are 30 children in a nursery school.

At least 1 adult is needed for every 8 children in the nursery.

(a) Work out the least number of adults needed in the nursery.

$$30 \div 8 = 3.75$$

so 4 Adults are needed

$$\begin{array}{l} 1A \rightarrow 8C \\ 2A \rightarrow 16C \\ 3A \rightarrow 24C \\ 4A \rightarrow 32C \end{array}$$

4
(2)

2 more children join the nursery.

(b) Does this mean that more adults are needed in the nursery?
You must give a reason for your answer.

no as $32 \div 8 = 4$ so still only
4 adults are needed (1)

(Total for Question 11 is 3 marks)

12 Emma has 45 rabbits.

30 of the rabbits are male.

8 of the female rabbits have short hair.

12 of the rabbits with long hair are male.

(a) Use the information to complete the two-way table.

	Male	Female	Total
Long hair	12	7	19
Short hair	18	8	26
Total	30	15	45

(3)

One of Emma's rabbits is chosen at random.

(b) Write down the probability that this rabbit is a female with short hair.

$$8/45$$

(1)

(Total for Question 12 is 4 marks)

DO NOT WRITE IN THIS AREA

DO NOT WRITE IN THIS AREA

DO NOT WRITE IN THIS AREA



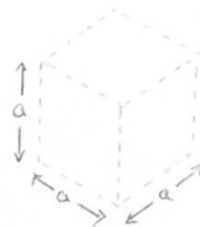
DO NOT WRITE IN THIS AREA

DO NOT WRITE IN THIS AREA

DO NOT WRITE IN THIS AREA

- 13 The total surface area of a cube is 294 cm^2 .

Work out the volume of the cube.



$$\text{Surface Area, } A = 6a^2$$

$$\text{Volume, } V = a^3$$

$$\text{so } A = 294 \text{ cm}^2 = 6a^2$$

$$\Rightarrow a^2 = 294 \div 6 = 49$$

$$a = \sqrt{49} = 7$$

$$V = a^3 = 7^3 = 343 \text{ cm}^3$$

cm^3

(Total for Question 13 is 4 marks)

- 14 Here are two fractions.

$$\frac{7}{5}$$

$$\frac{5}{7}$$

Work out which of the fractions is closer to 1

You must show all your working.

$$\frac{7}{5} = 1.4, \quad \frac{5}{7} = 0.7143 \dots$$

$$\text{so } \frac{5}{7} \text{ is closer to } 1$$

(Total for Question 14 is 3 marks)



P 4 9 3 4 7 A 0 9 2 4

- 15 There are only red buttons, yellow buttons and orange buttons in a jar.
The number of red buttons, the number of yellow buttons and the number of orange buttons are in the ratio 7:4:9

Work out what percentage of the buttons in the jar are orange.

$$R: Y: O$$

$$7: 4: 9$$

$$\begin{aligned} \text{total} &= 7 + 4 + 9 \\ &= 20 \end{aligned}$$

$$\text{hence } \% \text{ of Orange} = \frac{9}{20} \times 100$$

$$45 \%$$

(Total for Question 15 is 2 marks)

DO NOT WRITE IN THIS AREA

DO NOT WRITE IN THIS AREA

DO NOT WRITE IN THIS AREA



DO NOT WRITE IN THIS AREA

DO NOT WRITE IN THIS AREA

DO NOT WRITE IN THIS AREA

16 Berenika wants to buy 35 T-shirts.

Each T-shirt costs £5.80

Berenika does the calculation $40 \times 6 = 240$ to estimate the cost of 35 T-shirts.

(a) Explain how Berenika's calculation shows the actual cost will be less than £240

She uses over-estimated values for both cost and number of t-shirts. (1)

There is a special offer.

T-shirts £5.80 each.

Buy 30 or more T-shirts.
Get 10% off the total cost.

(b) Work out the actual cost of buying 35 T-shirts using the special offer.

first find 10% of £5.80 = £0.58

=> next subtract 10% value of t-shirt cost

$$5.80 - 0.58 = 5.22$$

=> multiply by 35

$$\Rightarrow \underline{182.7}$$

OR... multiply 5.80 by 35

$$= 203$$

then take 10% (20.3) of total

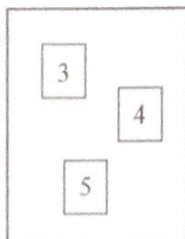
$$203 - 20.3 = \underline{182.7} \quad \text{£} \quad (4)$$

(Total for Question 16 is 5 marks)

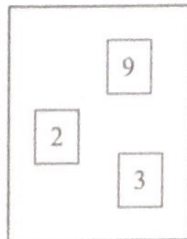


- 17 There are 3 cards in Box A and 3 cards in Box B.
There is a number on each card.

Box A



Box B



even + even = even
even + odd = odd
odd + odd = even

Ryan takes at random a card from Box A and a card from Box B.
He adds together the numbers on the two cards to get a total score.

Work out the probability that the total score is an odd number.

outcomes : $3 + 2 = 5$
that are $4 + 9 = 13$
odd $4 + 3 = 7$
 $5 + 2 = 7$

so $\frac{1}{3} \times \frac{2}{3} + \frac{2}{3} \times \frac{1}{3}$

$= \frac{2}{9} + \frac{2}{9} = \frac{4}{9}$

$4/9$

(Total for Question 17 is 2 marks)

DO NOT WRITE IN THIS AREA

DO NOT WRITE IN THIS AREA

DO NOT WRITE IN THIS AREA

DO NOT WRITE IN THIS AREA

18 Harry, Regan and Kelan share £450 in the ratio 2 : 5 : 3

How much money does Kelan get?

$$\text{total of } 2 + 5 + 3 = 10$$

$$\text{so } \frac{£450}{10} = £45$$

$$\text{Kelan gets } 3 \times 45 = £135$$

£

(Total for Question 18 is 2 marks)

DO NOT WRITE IN THIS AREA

19 Here is a list of ingredients for making 16 flapjacks.

Ingredients for 16 flapjacks

120 g butter
140 g brown sugar
250 g oats
2 tablespoons syrup

Jenny wants to make 24 flapjacks.

Work out how much of each of the ingredients she needs.

$$\frac{24}{16} = 1.5 \quad \text{so need } 1.5 \times \text{the ingredients for 16}$$

butter	180	g
brown sugar	210	g
oats	375	g
syrup	3	tablespoons

(Total for Question 19 is 3 marks)

DO NOT WRITE IN THIS AREA



P 4 9 3 4 7 A 0 1 3 2 4

- 20 Ami and Josh use a calculator to work out $\frac{595}{4.08^2 + 5.3}$

Ami's answer is 27.1115

Josh's answer is 271.115

One of these answers is correct.

Use approximations to find out which answer is correct.

$$\approx \frac{600}{16+5} = \frac{600}{21}$$

$$\text{so } \approx \frac{600}{20} \approx 30$$

so Ami is correct

(Total for Question 20 is 3 marks)

- 21 Work out $\frac{0.06 \times 0.0003}{0.01}$

Give your answer in standard form.

$$\frac{6 \times 10^{-2} \times 3 \times 10^{-4}}{1 \times 10^{-2}} = \frac{1.8 \times 10^{-5}}{1 \times 10^{-2}} = 1.8 \times 10^{-3}$$

(Total for Question 21 is 3 marks)



DO NOT WRITE IN THIS AREA

22 (a) Work out $\frac{2}{5} + \frac{1}{4}$

either: $\frac{8}{20} + \frac{5}{20} = \frac{13}{20}$

or $0.4 + 0.25 = 0.65$

(2)

(b) Write down the value of 2^{-3}

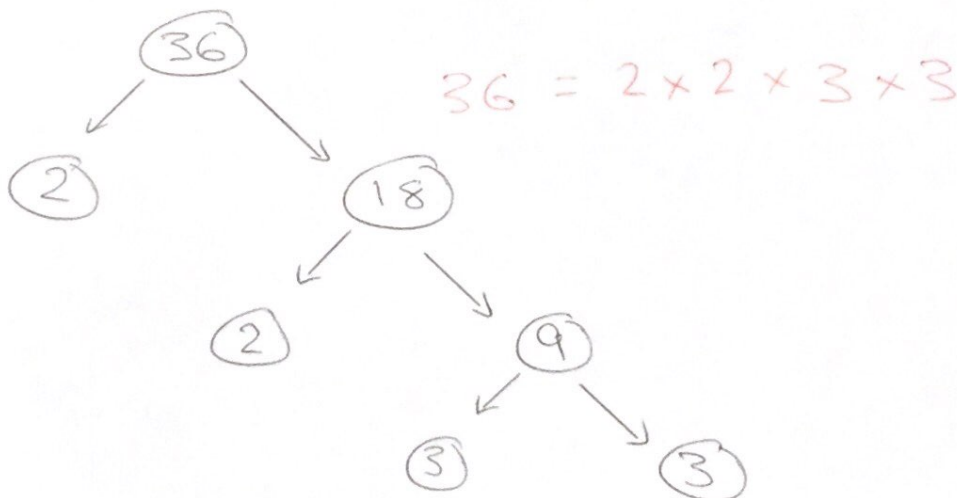
$\frac{1}{2 \times 2 \times 2} = \frac{1}{8}$

(1)

(Total for Question 22 is 3 marks)

DO NOT WRITE IN THIS AREA

23 Write 36 as a product of its prime factors.



(Total for Question 23 is 2 marks)

DO NOT WRITE IN THIS AREA



- 24 Kiaria is 7 years older than Jay.
Martha is twice as old as Kiaria.
The sum of their three ages is 77

Find the ratio of Jay's age to Kiaria's age to Martha's age.

$$K = J + 7$$

$$M = 2K$$

$$J + K + M = 77$$

$$J + (J + 7) + 2(J + 7) = 77$$

$$4J + 21 = 77, \quad 4J = 56$$

$$\Rightarrow J = 14$$

$$\Rightarrow K = 14 + 7 = 21$$

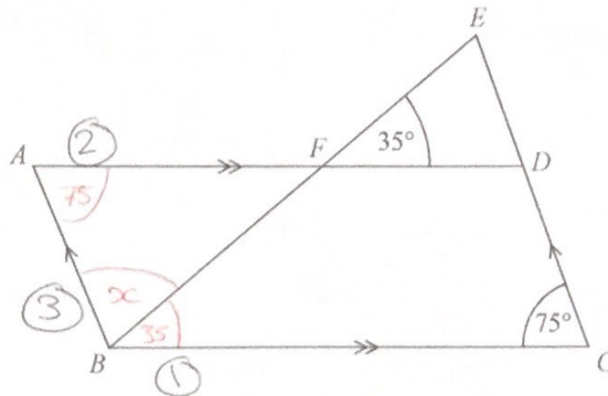
$$\Rightarrow M = 2 \times 21 = 42$$

$$14:21:42$$

(Total for Question 24 is 4 marks)



25



$ABCD$ is a parallelogram.

EDC is a straight line.

F is the point on AD so that BFE is a straight line.

Angle $EFD = 35^\circ$

Angle $DCB = 75^\circ$

Show that angle $ABF = 70^\circ$

Give a reason for each stage of your working.

$$FBC = 35^\circ \text{ as } EFD = FBC$$

① by corresponding angles

$$\begin{aligned} x &= 180 - 75 - 35 \\ &= 70^\circ \end{aligned}$$

② as opposite angles in a parallelogram are equal

and ③ co-interior angles sum to 180°

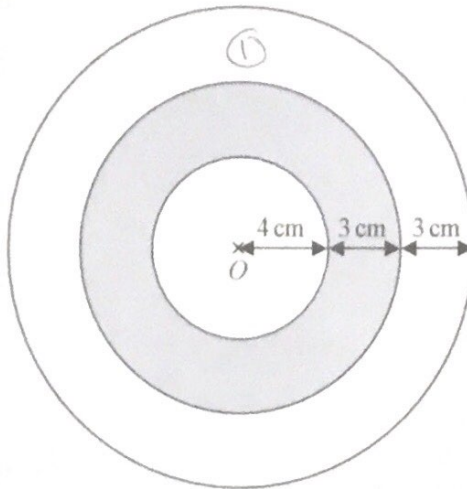
(Total for Question 25 is 4 marks)



P 4 9 3 4 7 A 0 1 7 2 4

26 The diagram shows a logo made from three circles.

$$\text{Area} = \pi r^2$$



Each circle has centre O .

Daisy says that exactly $\frac{1}{3}$ of the logo is shaded.

Is Daisy correct?

You must show all your working.

$$\begin{aligned} \textcircled{1} \text{ total Area} &= \pi (10)^2 \\ &= 100\pi \end{aligned}$$

$$\begin{aligned} \textcircled{2} \text{ Area of shaded section} \\ &= \pi (7)^2 - \pi (4)^2 = 49\pi - 16\pi \\ &= 33\pi \end{aligned}$$

$$\Rightarrow \text{area is } \frac{33\pi}{100\pi} = \frac{33}{100} \neq \frac{1}{3}$$

\therefore Daisy is incorrect

(Total for Question 26 is 4 marks)



27 The table shows information about the weekly earnings of 20 people who work in a shop.

Weekly earnings (£x)	Frequency
$150 < x \leq 250$	1
$250 < x \leq 350$	11
$350 < x \leq 450$	5
$450 < x \leq 550$	0
$550 < x \leq 650$	3

(a) Work out an estimate for the mean of the weekly earnings.

$$fx = 1 \times 200, 11 \times 300, 5 \times 400, \\ 0 \times 500, 3 \times 600$$

$$\frac{\sum fx}{\sum f} = \frac{7300}{20} = \underline{\underline{365}}$$

£ (3)

Nadiya says,

"The mean may **not** be the best average to use to represent this information."

(b) Do you agree with Nadiya?

You must justify your answer.

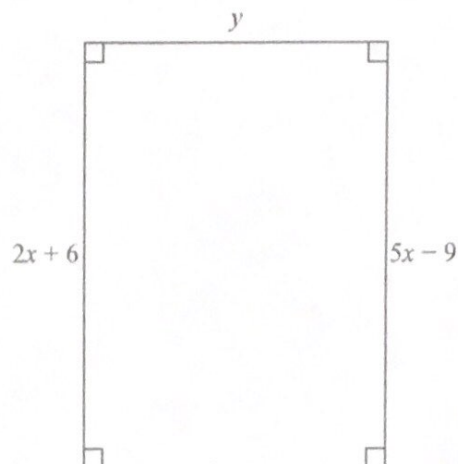
Yes as outliers significantly
affect the mean value.

(1)

(Total for Question 27 is 4 marks)



28 Here is a rectangle.



All measurements are in centimetres.

The area of the rectangle is 48 cm^2 .

Show that $y = 3$

$$2x + 6 = 5x - 9$$

$$\Rightarrow 3x = 15$$

$$x = 5$$

$$\therefore (2(5) + 6) \times y = 48$$

$$\Rightarrow 16y = 48$$

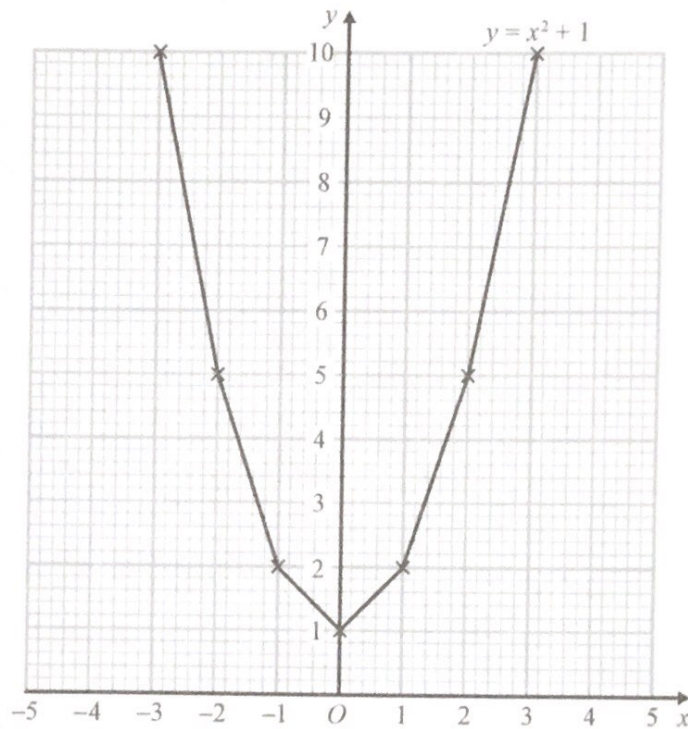
$$\Rightarrow y = \frac{48}{16} = 3$$

(Total for Question 28 is 4 marks)



29 Brogan needs to draw the graph of $y = x^2 + 1$

Here is her graph.



Write down one thing that is wrong with Brogan's graph.

$y = x^2 + 1$ should be drawn freehand as a curve not individual line segments connecting the points.

(Total for Question 29 is 1 mark)



P 4 9 3 4 7 A 0 2 1 2 4

- 30 In a sale, the normal price of a book is reduced by 30%.
The sale price of the book is £2.80

Work out the normal price of the book.

$$2.8 \div 0.70 = 4$$

$$\begin{aligned} \text{as } 2.8 \div \frac{7}{10} &= 2.8 \times \frac{10}{7} \\ &= \frac{28}{7} = \underline{\underline{4}} \\ &\text{£} \end{aligned}$$

(Total for Question 30 is 2 marks)

TOTAL FOR PAPER IS 80 MARKS

DO NOT WRITE IN THIS AREA

DO NOT WRITE IN THIS AREA

DO NOT WRITE IN THIS AREA



DO NOT WRITE IN THIS AREA

DO NOT WRITE IN THIS AREA

DO NOT WRITE IN THIS AREA

BLANK PAGE



P 4 9 3 4 7 A 0 2 3 2 4

DO NOT WRITE IN THIS AREA

DO NOT WRITE IN THIS AREA

DO NOT WRITE IN THIS AREA

BLANK PAGE

